

OMNIVIEW GANTRY

HIGH-ENERGY CARGO AND VEHICLE INSPECTION SYSTEM

KEY FEATURES AND BENEFITS

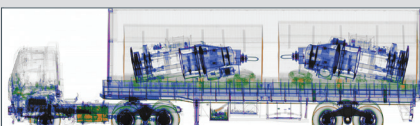
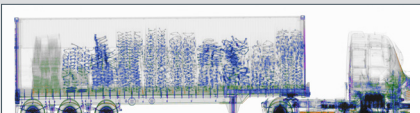
- Superior imaging performance with steel penetration of up to 400 mm and 0.8 mm wire resolution
- Four-color material discrimination
- Large scan tunnel



AS&E's OmniView® Gantry features powerful 6 MeV transmission X-rays that penetrate up to 400 mm (15.7 in) of steel. The system operates by moving on rails past stationary vehicles and cargo.

The bi-directional inspection system scans up to 28 trucks per hour. Ideal for contraband and threat detection and manifest verification at ports, borders, military bases, and security checkpoints, the OmniView Gantry can inspect even the most densely loaded containers.

Its unique design minimizes X-ray scatter in order to create a best-in-class, high-resolution X-ray image. The OmniView Gantry system offers material discrimination with four color categories: organics in orange, non-organics in green, metallics in blue, and heavy metals in purple. The large scan tunnel accommodates vehicles up to 5 meters tall.



Dual-energy transmission images with material discrimination

SPECIFICATIONS

OMNIVIEW GANTRY

PERFORMANCE

- **High-energy Mode Penetration:** 400 mm of steel at 0.2 m/s
- **Dual-energy Mode Penetration:** 380 mm of steel at 0.2 m/s
- **Wire Resolution:** 0.8 mm wire in air

OPERATING FEATURES

- **X-ray Source:** 6 MeV
- **Crew:** Scan coordinator and image analyst
- **Scan Speed:** 0.2, 0.3, 0.4 m/s (8, 12, 16 in/s)
- **Throughput:** 28 trucks per hour, using 54.86 m (180 ft) of rail and two trucks per scan
- **Power Requirements:**
 - **50 Hz:** 400 V, 90 A, 50 kVA
 - **60 Hz:** 480 V, 80 A, 50 kVA

SYSTEM DIMENSIONS AND SPECIFICATIONS

- **Width:** 11.1 m (36 ft 4 in)
- **Height:** 7.7 m (25 ft 2 in)
- **Length:** 5.3 m (17 ft 3 in)

Tunnel Dimensions

- **Width:** 3.6 m (11 ft 10 in)
- **Height:** 5.1 m (16 ft 9 in)
- **Length Options:**
 - **37 m (120 ft) rails:** Scan object(s) up to 19 m (62 ft) in length
 - **55 m (180 ft) rails:** Scan object(s) up to 38 m (125 ft) in length

Maximum Vehicle Dimensions

- **Width (between rub rails):** 3 m (9 ft 8 in)
- **Height:** 5 m (16 ft 4 in)
- **Length:** See Tunnel Length Options above

ENVIRONMENT

- **Operating Temperature:** -18° C to 55° C (0° F to 131° F)
- **Enclosed Facility:** System is designed to be deployed in an enclosed facility to reduce the size of the radiation controlled zone and for other environmental conditions

HEALTH AND SAFETY

- **Shielded Radiation Exclusion Zone (15 trucks per hour):** 48.5 m x 14.1 m (159 ft x 46 ft 5 in)
- **Radiation Dose at Exclusion Zone Boundary:** 0.5 µSv in any one hour
- **Radiation Dose to Crew:** Less than 0.5 µSv in any one hour
- **Radiation Dose to Cargo:** Less than 30 µSv/scan (3 mR) at 0.4 m/s

SYSTEM OPTIONS

- **Integrated Peripheral Devices:** License/number plate recognition system, container code recognition system, under-vehicle inspection system, and manifest scanner
- **Radiation Portal Monitor:** Gamma ray only or gamma/neutron detection
- **CIM Server Networking Solution:** Enables images from one or more systems to be sent to a centralized database and connects one or more analyst workstations for local or remote image analysis

Operator Alert Tools

- **Transmission Operator Alert Software:** Identifies high-density anomalies

The performance characteristics and photos in this document are indicative and for information only and specifications may vary depending on scan speeds, options and other factors; the specific characteristics of individual systems may differ based upon customer requirements, operation, and supplied options. In addition, due to continual development of Rapiscan Systems and AS&E products, we reserve the right to amend specifications without notice. Please note that due to U.S. laws and regulations, not all products are available for sale in all countries without restriction. Please contact your Rapiscan | AS&E Cargo Scanning & Solutions sales representative for more information or to discuss additional requirements.

© 2018 Rapiscan Systems | American Science and Engineering, Inc.

Rapiscan | AS&E — Part of the OSI Systems family of security companies. We deliver products and services that help our customers find threats and contraband with ease and confidence, while maximizing operational efficiency. Our global service network enables us to respond to customer needs quickly and provide exceptional support, because we know that every moment of uptime is critical. We understand the importance of our customers' missions—from uncovering trade fraud, to combating terrorism, to detecting drug and weapons smuggling, to exposing illegal immigration. That's why it's our mission to help them succeed.

US Operations
829 Middlesex Turnpike
Billerica, MA 01821

UK Operations
Prospect Way
Victoria Business Park
Biddulph, Stoke-on-Trent ST8 7PL

Contact
Tel: +1.978.262.8700
Fax: +1.978.262.0533
rapiscan-ase.com

Rapiscan
systems

AS&E