

EAGLE G60

HIGH-ENERGY GANTRY INSPECTION SYSTEM

KEY FEATURES AND BENEFITS

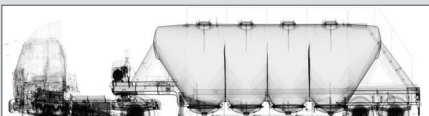
- Reliable 6 MeV X-ray imaging system
- High-quality, dual-energy imaging for the detection of explosives, weapons, and contraband
- Multiple configurations and operational modes that cater to various applications



The Eagle® G60 inspection system offers high-quality, dual-energy imaging for screening densely-packed cargo for threats and contraband, and verifying manifests. The system's innovative design combines high-energy imaging with operational flexibility to meet customers' diverse cargo screening requirements.

The rail-mounted Eagle G60 supports both gantry and portal mode operation, allowing for both the inspection of cargo containers and the safe screening of drive-through traffic. The multiple levels of imaging performance create flexibility for customers to select the system configuration best suited for their unique requirements.

The Eagle G60 system is ideal for inspection at critical facilities, border crossings, and seaports.



Eagle G60 high-energy transmission image

SPECIFICATIONS

EAGLE G60

TYPICAL GANTRY-MODE PERFORMANCE

	G60-S	G60-T	G60-R	G60-HP
Steel Penetration	330 mm	360 mm	350 mm	380 mm
Wire Resolution	1.2 mm	1.2 mm	1 mm	1.4 mm
Spatial Resolution	4 mm (H) 4 mm (V)	4 mm (H) 4 mm (V)	3 mm (H) 3 mm (V)	5 mm (H) 5 mm (V)

OPERATING FEATURES

- **X-ray Source:** 6 Mev
- **Crew:** Scan coordinator and image analyst
- **Scan Modes:** Gantry mode and optional portal mode
- **Scan Direction:** Gantry mode is bi-directional; portal scan mode is single-direction
- **Scanning Speed:** 0.4 m/s (16 in/s) gantry, 3–8 kph portal mode
- **System Throughput:** Up to 20 trucks per hour in gantry mode, up to 100 trucks per hour in portal mode
- **Power Requirements:**
 - **50 Hz:** 400 V, 63 A, 44 kVA
 - **60 Hz:** 220 V, 125 A, 48 kVA

SYSTEM DIMENSIONS AND SPECIFICATIONS

- **Width:** 8.7 m (28 ft 7 in)
- **Height:** 5.5 m (18 ft 1 in)
- **Length:** 3.6 m (11 ft 10 in)

Tunnel Dimensions

- **Width:** 4.7 m (15 ft 5 in)
- **Height:** 4.8 m (15 ft 9 in)
- **Length:** 30 m (98 ft 5 in) rails; Scan object(s) up to 22 m (72 ft) in length at 0.4 m/s

Maximum Vehicle Dimensions:

- **Width:** 2.8 m (9 ft 2 in)
- **Height:** 4.7 m (15 ft 5 in)
- **Length:** 22 m (72 ft 2 in)

ENVIRONMENT

- **Operating Temperature:** -10° C to 40° C (14° F to 104° F)

HEALTH AND SAFETY

- **Shielded Radiation Exclusion Zone (in gantry mode; 20 trucks per hour):** 54 m x 13.4 m (177 ft x 44 ft)
- **Radiation Dose at Exclusion Zone Boundary (in gantry mode):** 0.5 µSv in any one hour
- **Radiation Dose to Driver (in portal mode):** less than 0.25 µSv per scan
- **Radiation Dose to Crew:** 0.5 µSv in any one hour
- **Radiation Dose to Cargo:** less than 20 µSv per scan

¹ For G60-S, G60-T, G60-R configurations

The performance characteristics and photos in this document are indicative and for information only and do not represent any specific system configuration. Specifications and features of individual systems will vary based upon customer requirements, operation, supplied options, and other factors. Customers must refer to the relevant quote, proposal, or contract for the definition of a system configuration, including specifications and optional items.

Due to continual development of our products, we reserve the right to amend any of the information listed here without notice. Please note that due to U.S. laws and regulations, not all products are available for sale in all countries without restriction.

© 2020 Rapiscan Systems | American Science and Engineering, Inc.

SYSTEM OPTIONS

- **Portal Mode (for G60-T and G60-R models only):** Supports the drive-through scanning of traffic. Requires the purchase of traffic control and monitoring devices
- **CabScan® Mode:** While in portal mode, safely scans the cab of the truck from front bumper to start of cargo
- **Integrated Peripheral Devices:** License/number plate recognition system, container code recognition system, and manifest scanner
- **Integrated Radiation Detection:** Gamma or gamma/neutron
- **Extreme Cold Weather Package:** Extends the system operating temperature to -40° C
- **Extreme Hot Weather Package:** Extends the system operating temperature to +55° C

Rapiscan | AS&E — Part of the OSI Systems family of security companies. We deliver products and services that help our customers find threats and contraband with ease and confidence, while maximizing operational efficiency. Our global service network enables us to respond to customer needs quickly and provide exceptional support, because we know that every moment of uptime is critical. We understand the importance of our customers' missions—from uncovering trade fraud, to combating terrorism, to detecting drug and weapons smuggling, to exposing illegal immigration. That's why it's our mission to help them succeed.

US Operations
829 Middlesex Turnpike
Billerica, MA 01821

UK Operations
Prospect Way
Victoria Business Park
Biddulph, Stoke-on-Trent ST8 7PL

Contact
Tel: +1.978.262.8700
Fax: +1.978.262.0533
rapiscan-ase.com

Rapiscan®
systems

AS&E®